



WEST GLAMORGAN SAFEGUARDING BOARD JOINT ANNUAL PLAN **2020 - 2021**

This document is available in alternative formats.
Please contact: West Glamorgan Safeguarding
Board – Business Management Unit

Telephone: 01639 686049
Email: r.shepherd@npt.gov.uk

Contents

Introduction	Page 3
Core Business	Page 4
Members of the Safeguarding Boards	Page 5 – 8
What we propose for the coming year 2020-2010	Page 9 – 12
Expenditure	Page 13
Collaboration	Page 14

Introduction

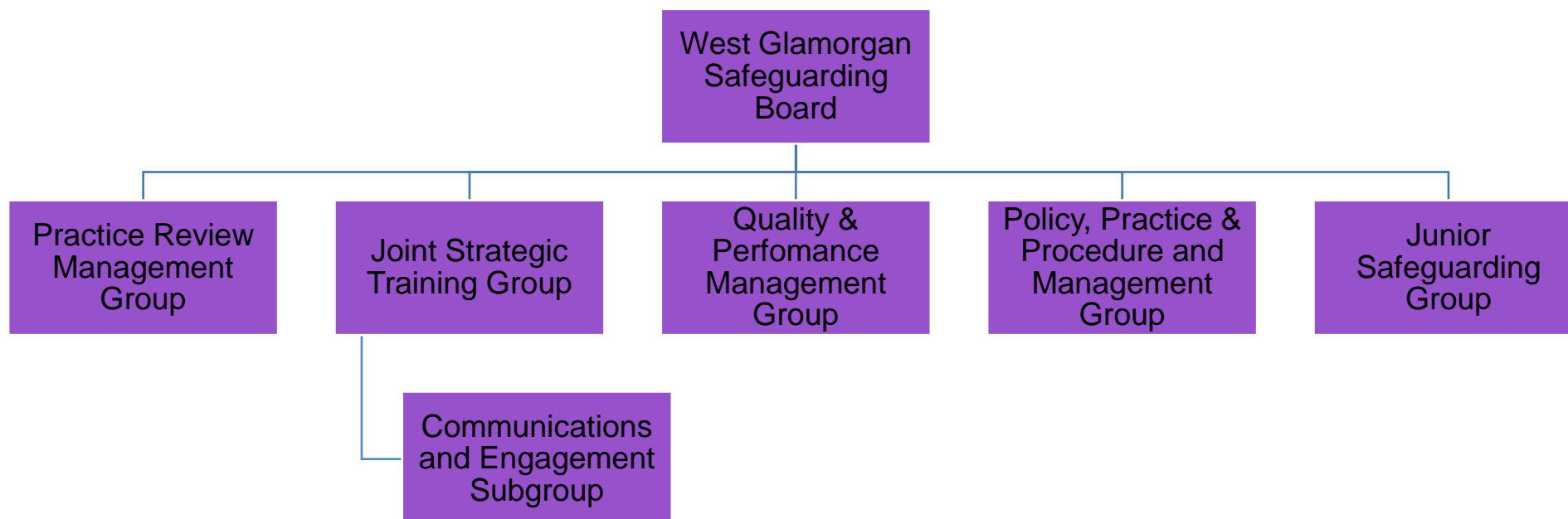
The West Glamorgan Safeguarding Board (WGSB), referred to herein as the 'Board', oversees safeguarding across Neath Port Talbot County Borough Council and the City and County of Swansea, an area with a population of approx. 389,406 (ONS data Nov 2018). The post-industrial geographical backdrop of the region is diverse, with an urban and rural spread. Such diversity brings to the fore many challenges including: poverty, inequality (Economic and Health) and unemployment to list only a few. As a region, Swansea and Neath Port Talbot Local Authority (LA) areas have the second and third highest rates of drug misuse deaths of all LAs across England and Wales (*Harm Reduction Database Wales: Drug related mortality Annual Report 2018-19*) and a high level of suicide (*Talk to me 2: Suicide and Self-Harm Prevention Strategy for Wales 2015-2020*). The WGSB is charged with the following safeguarding objective(s): to prevent and protect children and adults within its area from abuse, neglect or other forms of harm.



Core Business

This annual plan is written pursuant to Section 134 – 141 (Part 7) of the SSWBWA 2014 and is for both the West Glamorgan Safeguarding Children and Adult Board. Figure 1 below sets out the structure of the Board, including sub-groups with the addition of a newly established Junior Safeguarding Group. Membership and structures are regularly reviewed and updated within the Safeguarding Board arrangements and work plans for each sub-group are aligned with this business plan and include strategic priorities, actions to achieve and success measures to enable us to monitor effectiveness. The sub-groups' work plans also include mechanisms on how they will engage and include people who may be affected by the work of the Board. These plans are regularly reviewed and amended throughout the year with status reports outlining progress against the annual plan presented to the Board on a quarterly basis.

Figure 1



Members of the Safeguarding Boards

Membership of the Safeguarding Boards is compliant with Chapter two of the Guidance under Part 7 section 139(3) of the Social Services and Wellbeing (Wales) Act 2014.

For West Glamorgan Safeguarding Adult Board the membership and their area of responsibility is set out below:

Organisation	Post	Area of Responsibility	Name
City & County of Swansea	Director of Social Services	Co-chair of Adult Board Local Authority representative for City & County of Swansea	David Howes
Swansea Bay University Health Board	Deputy Director of Nursing and Patient Experience	Co-chair of Adult Board Lead of Safeguarding Swansea Bay University Health Board	Cathy Dowling
NPT County Borough Council	Director of Social Services, Health & Housing	Co-chair of Children Board & Local Authority representative for Neath Port Talbot CBC.	Andrew Jarrett
South Wales Police (Western BCU)	Superintendent	Co-chair Children Board & South Wales Police representative	Trudi Meyrick
Wales Probation Trust NPS	Assistant Chief Executive Head of Swansea, Neath Port Talbot and Bridgend	National Probation Service representative	Deanne Martin
City & County of Swansea	Head of Adult Safeguarding	Adult Services representative	Alex Williams
NPT County Borough Council	Head of Adult Services Service	Adult Services representative	Angela Thomas
Public Health Wales	Designated Nurse in Public Health Wales	National Safeguarding Team	Virginia Hewitt

Swansea Bay University Health Board	Head of Nursing - Safeguarding	Practice Review Management Group representative	Nicola Edwards
City & County of Swansea	Principal Officer for Safeguarding and Performance Quality	Policy, Practice and Procedure Management Group Chair	Damian Rees
NPT County Borough Council	Principal Officer Safeguarding Child and Adult	Quality & Performance Management group Chair	Chris Frey-Davies
South Wales Police	Independent Protecting Vulnerable Person Manager	Practice Review Management Group Chair South Wales Police Public Protection Unit	Sue Hurley
Swansea Bay University Health Board Mental Health	Mental Capacity Act and Deprivation of Liberty Safeguards	Representative for IMCA Service	Karen Williams
Swansea Council for Voluntary Services	Support Services Team Leader	Representative for SCVS	Danielle Lock
Secured Estate	Director/ Governor	HMP Swansea Secure Estate representative	Rob Denman
NPT County Borough Council	Learning, Training & Development Manager	Joint Strategic Training Group Chair	Lynne Doyle
Wales Ambulance Service Trust	Senior Professional Safeguarding Children and Adults	WAST representative	Rhiannon Thomas

For West Glamorgan Safeguarding Children Board, the membership and their area of responsibility is set out below:

Organisation	Post	Area of Responsibility	Name
NPTCBC	Director of Social Services Health & Housing	Co-chair Children Board & Local authority representative	Andrew Jarrett
South Wales Police (Western BCU)	Superintendent	Co-chair Children Board & South Wales Police representative	Trudi Meyrick
City & County of Swansea	Director of Social Services	Local Authority representative Swansea Council	David Howes
NPT County Borough Council	Assistant Director for Education	Local Authority representative	Chris Millis
National Probation Service	Assistant Chief Executive Head of Swansea, Neath Port Talbot and Bridgend	National Probation Service representative	Deanne Martin
Swansea Bay University Health Board	Deputy Director of Nursing and Patient Experience	Co-chair of Adult Board Lead of Safeguarding Swansea Bay University Health Board	Cathy Dowling
Swansea Bay University Health Board	Head of Nursing - Safeguarding	Practice Review Management Group representative	Nicola Edwards
NPT County Borough Council	Head of Children and Young People's Services	Children's Services Representative NPTCBC	Keri Warren
City & County of Swansea	Head of Child and Family Services	Children's Services representative Swansea Council	Julie Thomas
City & County of Swansea	Principal Officer for Safeguarding and Performance Quality	Policy, Practice and Procedure Management Group Chair	Damian Rees
NPT County Borough Council	Principal Officer Safeguarding Child and Adult	Quality & Performance Management group Chair	Chris Frey-Davies

South Wales Police	Independent Protecting Vulnerable Person Manager	Practice Review Management Group Chair	Sue Hurley
NPT County Borough Council	Learning, Training & Development Manager	Joint Strategic Training Group Chair	Lynne Doyle
Hillside Children's Secure Unit	Interim Principal Manager	Children's Secure Unit representative	Karen Wedmore
City & County of Swansea	Head of achievement and partnership	Local Authority representative Swansea Council	Helen Morgan - Rees
NSPCC	Services Manager	Voluntary sector representative	Tracey Holdsworth
Barnardo's	Strategic Manager	Voluntary sector representative	Kelly Ahern
CVS	CCoS CVS	Local Voluntary Sector representative across WB	Clare Hopkins
Youth Justice and Early Intervention Service	Youth Offending Services Manager	Western Bay Youth Offending services and Quality & Performance Management Group representative	Jay McCabe/Ali Davies
Public Health Wales National Rep.	Named Professional Safeguarding Children	PHW representative	Ian Smith
Wales Ambulance Service Trust	Senior Professional Safeguarding Children and Adults	WAST representative	Rhiannon Thomas

What we propose for the coming year (2020/2021)

Over the course of the last year (2019/2020) the work of the Board focused on Exploitation, Engagement & Participation and Effective Management of the Safeguarding Board. Up until March 2020 it was envisaged that some of these priorities would be taken forward into 2020/2021 i.e. the Board would use the data gathered to identify and understand themes and trends of exploitation across the region to inform best practice. New priorities were also identified: the implementation of the Wales Safeguarding Procedures (2019); a focus on Substance misuse and Suicide prevention etc. However, in light of Wales being gripped by the Covid-19 pandemic the Board will now park the aforementioned priorities and instead all safeguarding priorities have been set against the backdrop of Covid 19. In setting the priority area/focus for the forthcoming year the Board has due regard to its statutory responsibility to meet the core functions:

- Raising awareness of the Board's objectives to protect and prevent adults and children from becoming at risk of abuse, neglect and other forms of harm, and to provide information about how this might be achieved,
- Reviewing the efficacy of measures taken by agencies to implement the objectives of the Board and to make and monitor recommendations,
- Undertaking child practice reviews, adult practice reviews, audits, investigations and other reviews as are required in pursuance of its objectives and to disseminate learning and information arising from these reviews,
- Reviewing the performance of the Board and its partners and bodies represented on the Board in carrying out its objectives,
- Facilitating research into protection from, and prevention of, abuse and neglect of children and adults at risk of harm,
- Review the training needs of practitioners working in the area of the Board in order to identify training to assist in the protection and prevention of abuse and neglect of children and adults at risk of harm.

Safeguarding Priority: To ensure a robust, resilient and consistent approach to safeguarding practice during the Covid 19 pandemic

Priority Area/Focus	What do we want to achieve?	What are the outcome indicators?	Respective Subgroup
<p>To develop a clear picture of the impact Covid 19 is having across the Region i.e. For individuals, communities, the work force and partner agencies.</p> <p>To oversee and review the efficacy of measures taken by agencies as they realign governance, processes and practice to respond to Covid 19.</p>	<p>A clear picture of the spread and impact Covid 19 is having across the region.</p>	<p>A suite of data to allow the virus to be tracked across the region to inform response and to pre-empt safeguarding issues arising i.e. an increase in unsafe hospital discharge, care home pressures etc.</p>	QPMG
		<p>A suite of data to ensure changes to practice are monitored, understood and responded to by the Board i.e. Work force capacity issues across a range of agencies: domiciliary care, social care, care homes; Rapid discharge, unsafe discharge; trends in reports of Domestic Abuse, Financial abuse, Mental Health, Substance misuse etc.</p>	QPMG
<p>To ensure the response to Covid 19, across the region, is measured, legal and consistent and that safeguarding remains the golden thread.</p>	<p>A clear message to the public, communities, professionals and partner agencies that safeguarding at these times remains a priority.</p>	<p>Ensure our communities reduce the spread of the virus through supporting and encouraging self-isolation, social distancing and updating public and staff when guidance changes</p>	Communication & Engagement subgroup
		<p>The Safeguarding Board will ensure factual information from Public Health Wales, Welsh Government and others is distributed to keep the regional population – citizens and workforce - well informed, whilst seeking to reduce the risk of abuse i.e. online abuse and individuals being scammed/abused i.e. financial etc.</p>	Communication & Engagement Subgroup

		The Safeguarding Board to encourage reviewing and developing use of technology to safeguard both staff and communities to ensure safeguarding messages are cascaded in an effective manner	Business Unit and Communication & Engagement Subgroup
		Develop training resources and online information for volunteers and all staff working at this time	JSTG
		To coordinate training on safeguarding, emergency medication and manual handling training for social workers and other appropriate employees who can be re-deployed to support home care with direct care calls	JSTG
		Develop and review regional policy, procedures and guidance on how services will continue to operate during the pandemic. This document will be circulated to all Safeguarding Board partners	PPPMG
		To provide a forum to support multi agency partners for the duration of these unprecedented times	Safeguarding Board Meetings
		To continue to collate, effectively record and retain new referrals for both Adult / Child Practice Reviews and PRUDiC's in accordance with the guidance for discussion, scrutiny, transparency and decision making once members of the PRMG can resume and progress in an effective manner without interference with the current priorities for all agencies	Business unit and PRMG
		To undertake rapid reviews, providing there are representatives from all agencies available, under the existing MAPF guidance for the purpose of early learning, in respect of abuse and neglect arising over the course of the pandemic and which would need to be acted upon. N.B. All current CPR and APR will be placed on hold	Business unit and PRMG
		Junior Safeguarding Board to ascertain, for example, via an online survey, how children and young people are managing at home.	JSB/QPMG

		To link in with regional groups (VAWDASV, CSP, APB etc.), including those set up across the region to respond to the pandemic i.e. Gold, Silver, Bronze, thus keeping the Board abreast of developments and assurances in respect of safeguarding per se.	Safeguarding Board members
--	--	---	----------------------------

Expenditure

The West Glamorgan Safeguarding Board is funded by contributions from partner organisations using the funding formula set out in the Working Together to Safeguard People – Volume 1. The Safeguarding Board is supported by a central Business Management Unit consisting of a Business Manager, 2 Business Co-ordinators and a Business support administrator.

Projected Budget for 2020/21 Is as follows:

Item	Type	Allocated budget
Staff	1 x Board Manager, 2 x Coordinators 1 x Administrator	£144,700
Conferences/Awareness raising	1 x annual conference, 6 x multi agency learning events	£9,000
Practice Reviews/Chronolator licence	APRs x 6 CPRs x 6	£1,200
Training	Various	£5,000
Admin	Travel, subsistence, mobiles, printing	£4,000
	TOTAL:	£163,900

Collaboration

The role of collaboration and participation for the Safeguarding Board is twofold. The SSWBA Part 7 Volume 1 outlines the work of the Safeguarding Board; to provide children and adults an opportunity to participate in its functions. In addition the Safeguarding Board has an assurance role in ensuring partner agencies are engaging with people and the voice of the adult or child at risk is heard across safeguarding practice. This will inevitably look different across agencies the Board has a role in the continuous audit and review of this area. The Core Business should ensure that each Management Group 'Work Plan' captures the voice of the people.

The West Glamorgan Safeguarding Board acknowledge the links between local, regional and national partnerships and the safeguarding themes that run through them. The Board will continue to forge strong working relationships with partners and organisations locally, regionally and nationally to ensure Safeguarding is on everyone's agenda. These include, Public Service Boards, Community Safety Partnerships, other Safeguarding Boards, National Independent Safeguarding Board and Welsh Government.